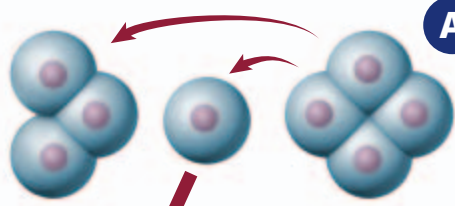
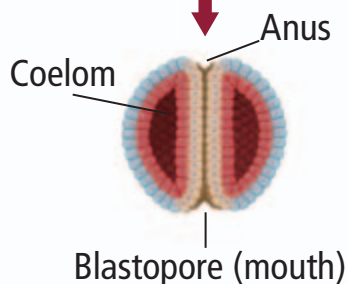
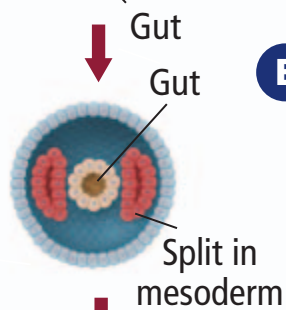
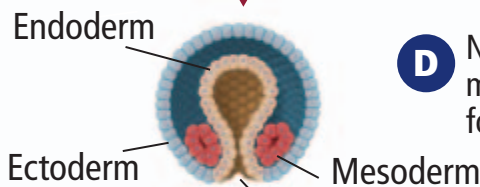
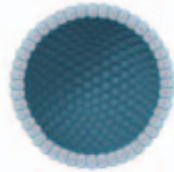


Protostome Development



Development altered

Cells not aligned



A If one cell is removed from a protostome at the four-cell stage, the development of the embryos is altered. If a cell is removed in a deuterostome at this stage, each cell or group of cells is not altered and will develop into a normal embryo.

B Another difference is apparent at the eight-cell stage. In protostomes, the four cells are between the other four cells. In deuterostomes, the cells align.

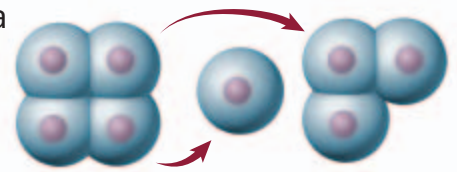
C A blastula forms in both types of development.

D Note the location of mesoderm as the gastrula forms.

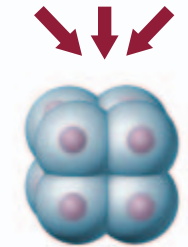
E As the embryo continues to develop, the mesoderm splits in protostomes to form the coelom. In deuterostomes, the coelom is formed from pouches of mesoderm that separate from the gut.

F The opening in the gastrula, called a blastopore, becomes the mouth in protostomes and the anus in deuterostomes.

Deuterostome Development



Normal larvae develop



Cells aligned

